

Technical Sheet / Scheda Tecnica

FLOS 9

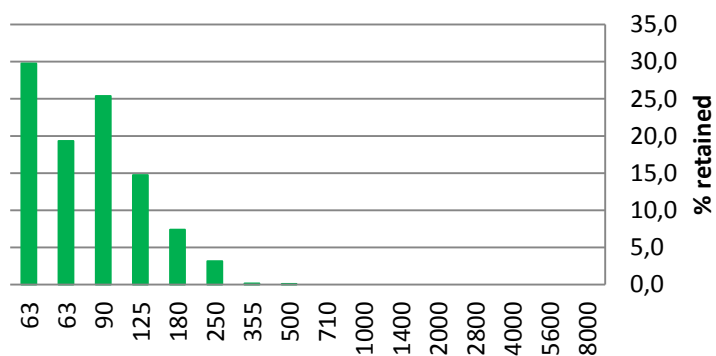
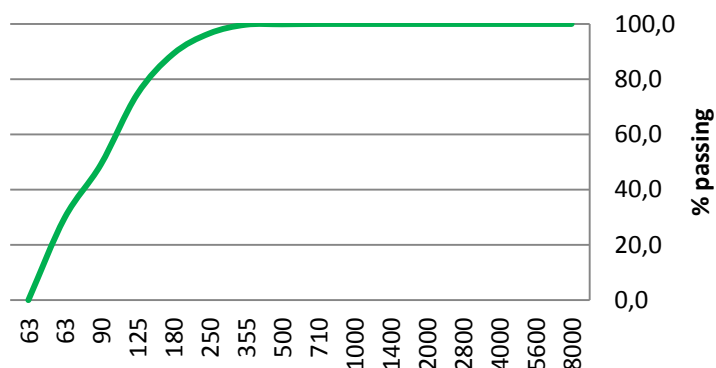
Particle Size Distribution Analysis

Country of production / Paese di produzione: ITALY

Distribuzione Granulometrica:

Rev 0 del 12/15

Size [µm]	% Passing	% Retained	Category
8000	100,0	0,0	Stones
5600	100,0	0,0	Coarse
4000	100,0	0,0	Gravel
2800	100,0	0,0	Fine Gravel
2000	100,0	0,0	
1400	100,0	0,0	Very Coarse
1000	100,0	0,0	Sand
710	100,0	0,0	Coarse Sand
500	99,9	0,1	
355	99,7	0,2	Medium
250	96,6	3,2	Sand
180	89,2	7,4	Fine Sand
125	74,5	14,7	
90	49,1	25,4	Very fine
63	29,8	19,3	Sand
<63	0,0	29,8	Silt / Clay



Chemical analysis / Analisi Chimica:

Oxides / Ossidi	%
SiO ₂	68.8
Al ₂ O ₃	7.00
Fe ₂ O ₃	0.16
TiO ₂	0.04
CaO	10.0
MgO	0.10
K ₂ O	4.00
Na ₂ O	0.50
L.O.I. [1100°C]	8.60

Physical Properties / Proprietà Fisiche:

Saturated Hydraulic Conductivity [µs/cm ²]	250
Bulk Density [g/cc]	1.6
pH [1:1 water]	7.5 – 8.5
Moisture [%]	< 5.0 %



MINERALI INDUSTRIALI S.r.l. – SPORT&LEISURE

Sede operativa: Via Virauda, 1 - 13045 Lozzolo (VC) – Italia

Per informazioni tecnico commerciali: tel. +39 0163 89121 – e mail fcibin@min-ind.it

sport.mineraliindustriali.it

youtube.com/mineraliindustriali