

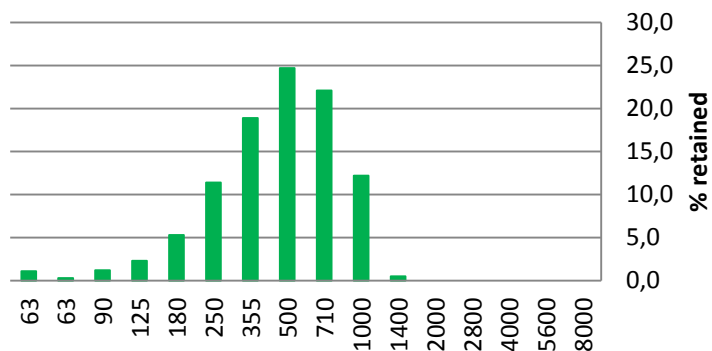
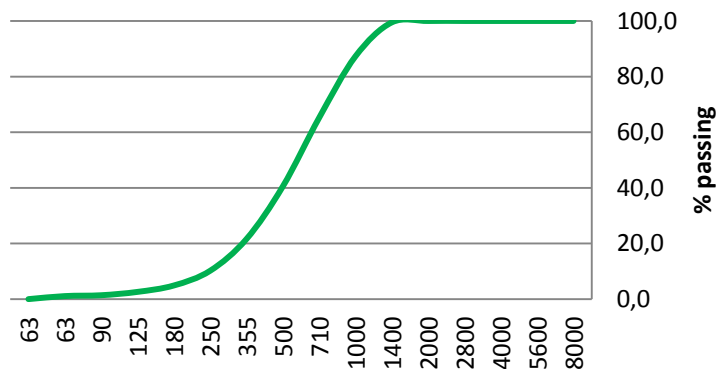
### Particle Size Distribution Analysis

Country of production / Paese di produzione: ITALY

#### Distribuzione Granulometrica:

Rev 0 del 06/15

Size [µm]	% Passing	% Retained	Category
8000	100,0	0,0	Stones
5600	100,0	0,0	Coarse
4000	100,0	0,0	Gravel
2800	100,0	0,0	Fine Gravel
2000	100,0	0,0	
1400	99,5	0,5	Very Coarse
1000	87,5	12,5	Sand
710	65,0	22,0	Coarse Sand
500	40,5	24,5	
355	21,5	19,0	Medium
250	10,0	11,5	Sand
180	5,0	5,5	Fine Sand
125	2,5	2,0	
90	1,5	1,2	Very fine
63	1,0	0,3	Sand
<63	0,0	1,0	Silt / Clay



#### Chemical analysis / Analisi Chimica:

Oxides / Ossidi	%
SiO <sub>2</sub>	63.8
Al <sub>2</sub> O <sub>3</sub>	17.0
Fe <sub>2</sub> O <sub>3</sub>	6.50
TiO <sub>2</sub>	0.90
CaO	1.60
MgO	0.70
K <sub>2</sub> O	5.00
Na <sub>2</sub> O	3.00
L.O.I. [1100°C]	1.40

#### Physical Properties / Proprietà Fisiche:

Saturated Hydraulic Conductivity [µs/cm <sup>2</sup> ]	100
Bulk Density [g/cc]	1.5
pH [1:1 water]	6.5 - 7.0
Moisture [%]	< 1.0 %

