

Technical Sheet / Scheda Tecnica

## S40/45FL

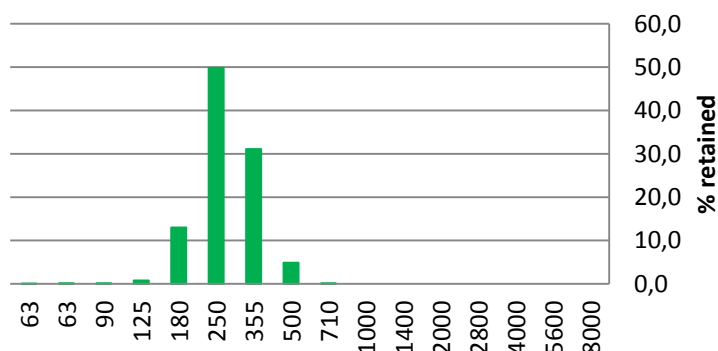
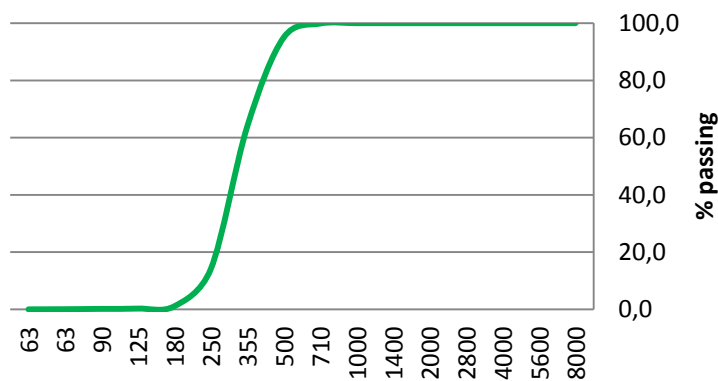
### Particle Size Distribution Analysis

#### Distribuzione Granulometrica:

Size [µm]	% Passing	% Retained	Category
8000	100,0	0,0	Stones
5600	100,0	0,0	Coarse
4000	100,0	0,0	Gravel
2800	100,0	0,0	Fine Gravel
2000	100,0	0,0	
1400	100,0	0,0	Very Coarse
1000	100,0	0,0	Sand
710	99,9	0,1	Coarse Sand
500	95,0	5,0	
355	64,0	31,0	Medium
250	14,0	50,0	Sand
180	1,0	13,0	Fine Sand
125	0,4	0,6	
90	0,2	0,1	Very fine
63	0,1	0,1	Sand
<63	0,0	0,1	Silt / Clay

Country of production / Paese di produzione: PORTUGAL

Rev 0 del 07/15



### Chemical analysis / Analisi Chimica:

Oxides / Ossidi	%
SiO <sub>2</sub>	99.5
Al <sub>2</sub> O <sub>3</sub>	0.20
Fe <sub>2</sub> O <sub>3</sub>	0.015
TiO <sub>2</sub>	0.02
CaO	n.d.
MgO	n.d.
K <sub>2</sub> O	n.d.
Na <sub>2</sub> O	n.d.
L.O.I. [1100°C]	0.20

### Physical Properties / Proprietà Fisiche:

Saturated Hydraulic Conductivity [µs/cm <sup>2</sup> ]	250
Bulk Density [g/cc]	1.5
pH [1:1 water]	7.5 – 8.5
Moisture [%]	< 3.0 %



MINERALI INDUSTRIALI S.r.l. – SPORT&LEISURE

Sede operativa: Via Virauda, 1 - 13045 Lozzolo (VC) – Italia

Per informazioni tecnico commerciali: tel. +39 0163 89121 – e mail [fcibin@min-ind.it](mailto:fcibin@min-ind.it)

[sport.mineraliindustriali.it](http://sport.mineraliindustriali.it)

[youtube.com/mineraliindustriali](https://youtube.com/mineraliindustriali)