

Technical Sheet / Scheda Tecnica

## SABBIA FINE NATURALE H7

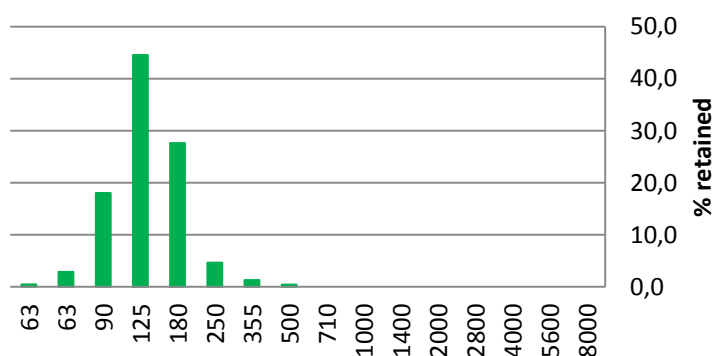
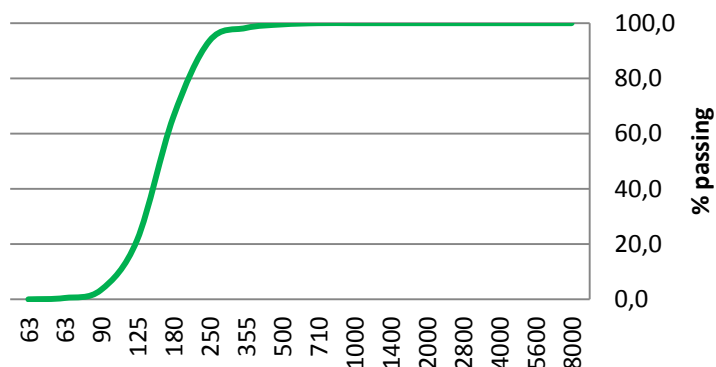
### Particle Size Distribution Analysis

#### Distribuzione Granulometrica:

Size [µm]	% Passing	% Retained	Category
8000	100,0	0,0	Stones
5600	100,0	0,0	Coarse
4000	100,0	0,0	Gravel
2800	100,0	0,0	Fine Gravel
2000	100,0	0,0	
1400	100,0	0,0	Very Coarse
1000	100,0	0,0	Sand
710	100,0	0,0	Coarse Sand
500	99,5	0,5	
355	98,5	1,5	Medium
250	93,5	4,5	Sand
180	66,0	27,5	Fine Sand
125	21,5	44,5	
90	3,3	18,0	Very fine
63	0,5	3,0	Sand
<63	0,0	0,5	Silt / Clay

Country of production / Paese di produzione: ITALY

Rev 0 del 07/15



### Chemical analysis / Analisi Chimica:

Oxides / Ossidi	%
SiO <sub>2</sub>	80.7
Al <sub>2</sub> O <sub>3</sub>	10.1
Fe <sub>2</sub> O <sub>3</sub>	0.80
TiO <sub>2</sub>	n.d.
CaO	0.40
MgO	n.d.
K <sub>2</sub> O	7.40
Na <sub>2</sub> O	0.70
L.O.I. [1100°C]	0.40

### Physical Properties / Proprietà Fisiche:

Saturated Hydraulic Conductivity [µs/cm]	1300
Bulk Density [g/cc]	1.2
pH [1:1 water]	6.5 – 7.5
Moisture [%]	< 8.0 %



MINERALI INDUSTRIALI S.r.l. – SPORT&LEISURE

Sede operativa: Via Virauda, 1 - 13045 Lozzolo (VC) – Italia

Per informazioni tecnico commerciali: tel. +39 0163 89121 – e mail [fcibin@min-ind.it](mailto:fcibin@min-ind.it)

[sport.mineraliindustriali.it](http://sport.mineraliindustriali.it)

[youtube.com/mineraliindustriali](https://youtube.com/mineraliindustriali)