

Technical Sheet / Scheda Tecnica

## GS60

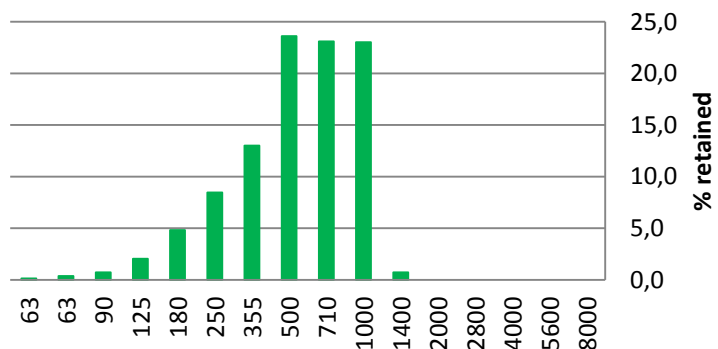
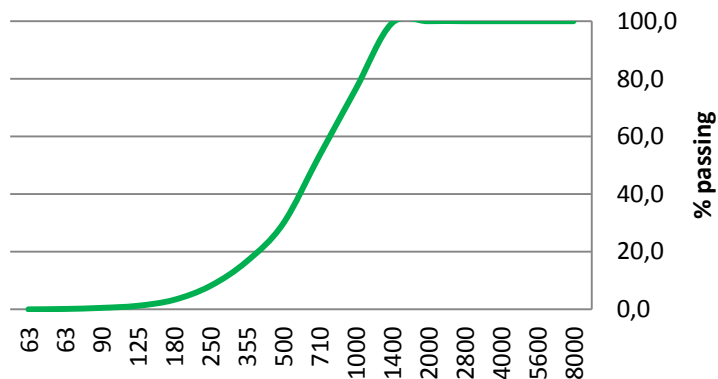
### Particle Size Distribution Analysis

#### Distribuzione Granulometrica:

Size [µm]	% Passing	% Retained	Category
8000	100,0	0,0	Stones
5600	100,0	0,0	Coarse Gravel
4000	100,0	0,0	
2800	100,0	0,0	Fine Gravel
2000	100,0	0,0	
1400	99,5	0,5	Very Coarse Sand
1000	76,0	23,0	
710	53,0	23,0	Coarse Sand
500	30,0	23,5	
355	16,5	12,5	Medium Sand
250	8,0	8,5	
180	3,5	5,0	Fine Sand
125	1,5	3,0	
90	0,5	0,5	Very fine Sand
63	0,1	0,4	
<63	0,0	0,1	Silt / Clay

Country of production / Paese di produzione: ITALY

Rev 0 del 06/15



### Chemical analysis / Analisi Chimica:

Oxides / Ossidi	%
SiO <sub>2</sub>	76.5
Al <sub>2</sub> O <sub>3</sub>	13.3
Fe <sub>2</sub> O <sub>3</sub>	0.40
TiO <sub>2</sub>	0.02
CaO	1.20
MgO	0.10
K <sub>2</sub> O	4.70
Na <sub>2</sub> O	3.40
L.O.I. [1100°C]	0.30

### Physical Properties / Proprietà Fisiche:

Saturated Hydraulic Conductivity [µs/cm <sup>2</sup> ]	100
Bulk Density [g/cc]	1.5
pH [1:1 water]	6.5 - 7.0
Moisture [%]	< 5.0 %



MINERALI INDUSTRIALI S.r.l. – SPORT&LEISURE

Sede operativa: Via Virauda, 1 - 13045 Lozzolo (VC) – Italia

Per informazioni tecnico commerciali: tel. +39 0163 89121 – e mail [fcibin@min-ind.it](mailto:fcibin@min-ind.it)

[sport.mineraliindustriali.it](http://sport.mineraliindustriali.it)

[youtube.com/mineraliindustriali](https://youtube.com/mineraliindustriali)