

Technical Sheet / Scheda Tecnica

MIT TS2

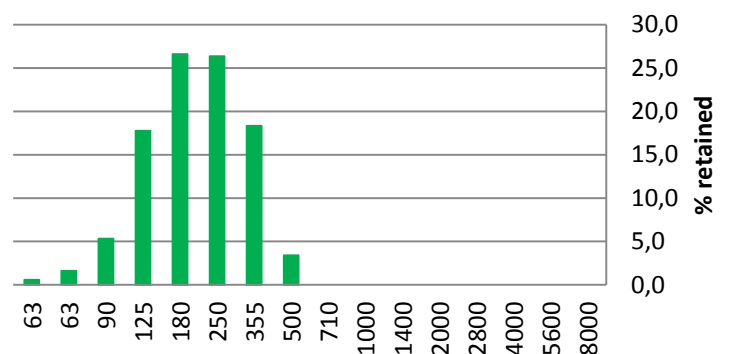
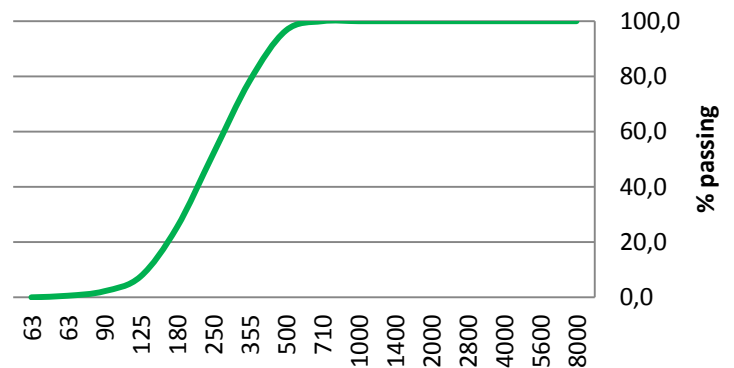
Particle Size Distribution Analysis

Country of production / Paese di produzione: TUNISIA

Distribuzione Granulometrica:

Rev 0 del 07/15

Size [µm]	% Passing	% Retained	Category
8000	100,0	0,0	Stones
5600	100,0	0,0	Coarse
4000	100,0	0,0	Gravel
2800	100,0	0,0	Fine Gravel
2000	100,0	0,0	
1400	100,0	0,0	Very Coarse
1000	100,0	0,0	Sand
710	100,0	0,0	Coarse Sand
500	96,5	3,5	
355	78,0	18,0	Medium
250	52,0	26,5	Sand
180	25,0	26,5	Fine Sand
125	7,5	18,0	
90	2,5	5,5	Very fine
63	0,5	1,5	Sand
<63	0,0	0,5	Silt / Clay



Chemical analysis / Analisi Chimica:

Oxides / Ossidi	%
SiO ₂	99.0
Al ₂ O ₃	0.25
Fe ₂ O ₃	0.04
TiO ₂	0.03
CaO	0.10
MgO	0.01
K ₂ O	0.10
Na ₂ O	0.05
L.O.I. [1100°C]	0.30

Physical Properties / Proprietà Fisiche:

Saturated Hydraulic Conductivity [µs/cm ²]	250
Bulk Density [g/cc]	1.6
pH [1:1 water]	7.5 – 8.5
Moisture [%]	< 5.0 %



MINERALI INDUSTRIALI S.r.l. – SPORT&LEISURE

Sede operativa: Via Virauda, 1 - 13045 Lozzolo (VC) – Italia

Per informazioni tecnico commerciali: tel. +39 0163 89121 – e mail fcibin@min-ind.it

sport.mineraliindustriali.it

youtube.com/mineraliindustriali