

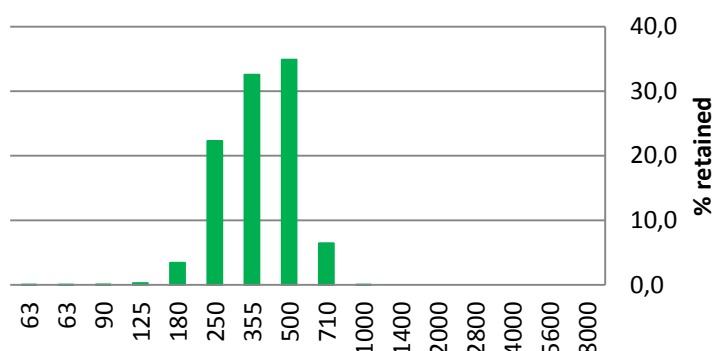
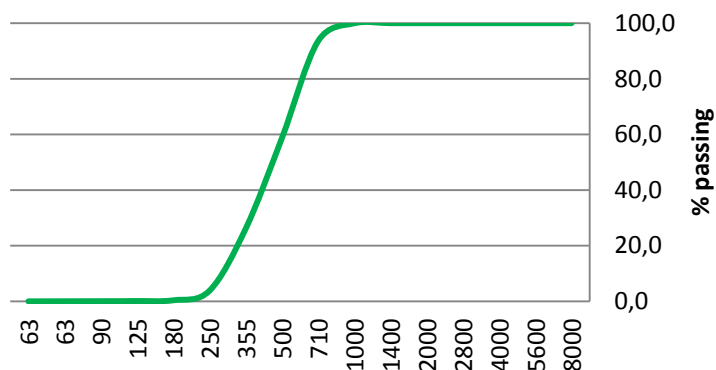
## Particle Size Distribution Analysis

### Distribuzione Granulometrica:

Size [µm]	% Passing	% Retained	Category
8000	100,0	0,0	Stones
5600	100,0	0,0	Coarse
4000	100,0	0,0	Gravel
2800	100,0	0,0	Fine Gravel
2000	100,0	0,0	
1400	100,0	0,0	Very Coarse
1000	99,9	0,1	Sand
710	93,5	6,5	Coarse Sand
500	58,5	35,0	
355	26,0	32,5	Medium
250	4,0	22,5	Sand
180	0,4	3,2	Fine Sand
125	0,1	0,1	
90	0,1	0,1	Very fine
63	0,0	0,0	Sand
<63	0,0	0,0	Silt / Clay

Country of production / Paese di produzione: ITALY

Rev 0 del 07/15



## Chemical analysis / Analisi Chimica:

Oxides / Ossidi	%
SiO <sub>2</sub>	88.3
Al <sub>2</sub> O <sub>3</sub>	6.0
Fe <sub>2</sub> O <sub>3</sub>	0.30
TiO <sub>2</sub>	0.02
CaO	0.02
MgO	0.02
K <sub>2</sub> O	4.80
Na <sub>2</sub> O	0.20
L.O.I. [1100°C]	0.20

## Physical Properties / Proprietà Fisiche:

Saturated Hydraulic Conductivity [µs/cm]	1300
Bulk Density [g/cc]	1.2
pH [1:1 water]	6.5 – 7.5
Moisture [%]	< 8.0 %

